

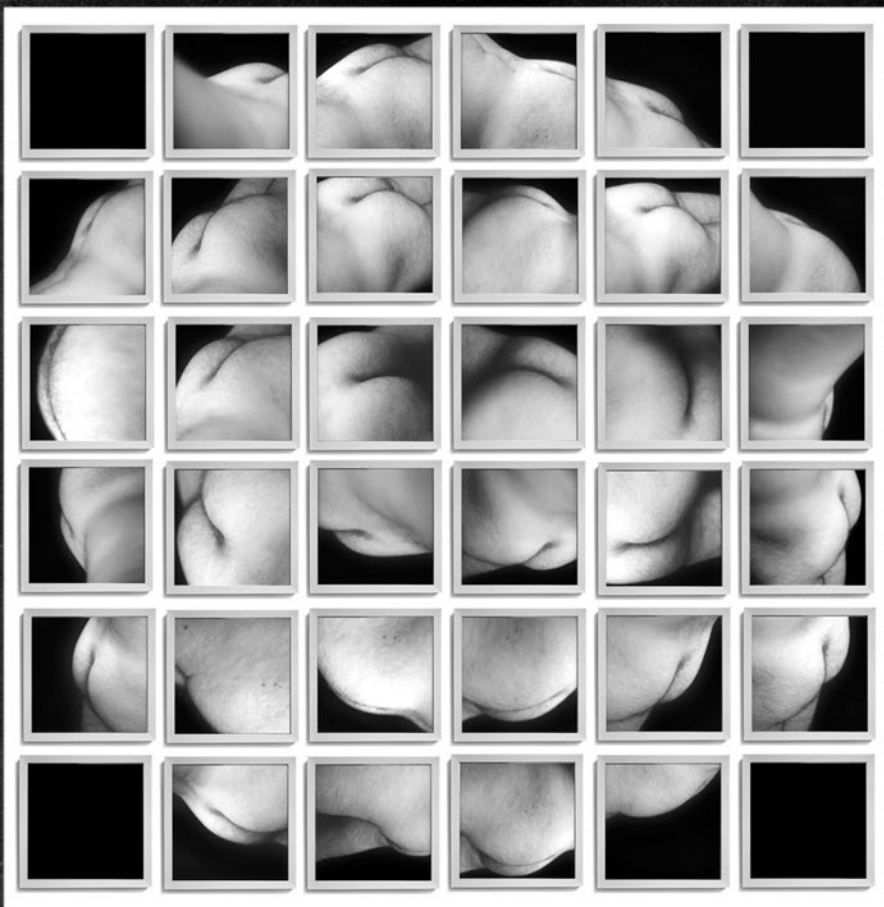
ARTNOW

BOSTONNEWENGLAND

Gallery Guide

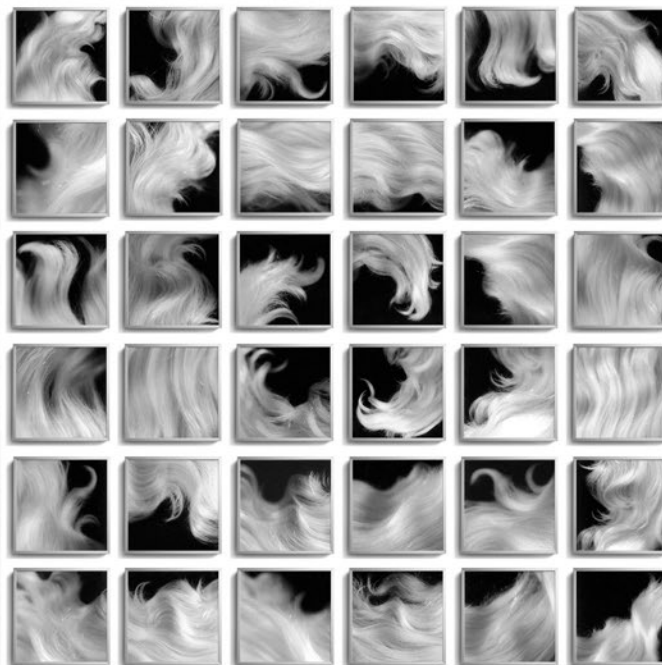
www.galleryguide.org

February 2001



Chris Komater at Bernard Toale Gallery, Boston

Chris Komater: Harem



Turner, 1999, 36 framed gelatin silver prints, each print 7 x 7 inches, total dimension: 59 x 59 inches framed

Chris Komater has reinvigorated the tradition of the male nude in art with his formally elegant, kaleidoscopic images that emphasize details rather than the whole. Komater's focus creates abstraction based on representation – and the resulting images become ripe with abundant questions and evocations.

For the San Francisco based Komater, the bodies of his male subjects are the source of a lover's or scientist's close examination. Hair is his subject of choice. From the closely shaved edge of a beard to the fur covered shoulders of an imposing torso, the abstract quality of this uniquely male feature draws Komater and the viewer into the musky realm of turbulence, testosterone and poetry.

For his first solo exhibition at the Bernard Toale Gallery, Komater will exhibit six of his multi-paneled, black and white photo-

graphs. *Sweetheart* consists of 36 images of buttocks and thighs in undulating waves recalling the petals of a flower – ultimately hiding more than it reveals about the mysteries of masculinity; while *Turner* references Hollywood screen siren Lana Turner and the iconography and power of blonde hair in a swirling and fiery chorus of images.

The show *Harem* opens January 31 and runs through February 24. The opening reception is February 3, 3-5:30 p.m.

BERNARD TOALE GALLERY

450 Harrison Avenue
Boston, MA 02118
617-482-2477
www.bernardtoalegallery.com

On the cover: *Sweetheart*, 1999, 36 framed gelatin silver prints, each print 7 x 7 inches, total dimension: 59 x 59 inches framed